

NSE6

Number: NSE6

Passing Score: 800

Time Limit: 120 min



6 - Fortinet Advanced Products Professional

Exam A

QUESTION 1

How do you configure a FortiGate to apply traffic shaping to P2P traffic, such as BitTorrent?



- A. Apply a traffic shaper to a BitTorrent entry in an application control list, which is then applied to a firewall policy.
- B. Enable the *shape* option in a firewall policy with *service* set to BitTorrent.
- C. Define a DLP rule to match against BitTorrent traffic and include the rule in a DLP sensor with traffic shaping enabled.
- D. Apply a traffic shaper to a protocol options profile.

Correct Answer: A

Section: (none)

Explanation

Explanation/Reference:

QUESTION 2

Which network protocols are supported for administrative access to a FortiGate unit? (Choose three.)

- A. SMTP
- B. WINS
- C. HTTP
- D. Telnet
- E. SSH

Correct Answer: CDE

Section: (none)

Explanation

Explanation/Reference:

QUESTION 3

In which process states is it impossible to interrupt/kill a process? (Choose two.)

- A. S – Sleep
- B. R – Running
- C. D – Uninterruptable Sleep
- D. Z – Zombie

Correct Answer: CD

Section: (none)

Explanation

Explanation/Reference:

QUESTION 4

What is the FortiGate password recovery process?

- A. Interrupt boot sequence, modify the boot registry and reboot. After changing the password, reset the boot registry.
- B. Log in through the console port using the "maintainer" account within several seconds of physically power cycling the FortiGate.
- C. Hold down the CTRL + Esc (Escape) keys during reboot, then reset the admin password.
- D. Interrupt the boot sequence and restore a configuration file for which the password has been modified.

Correct Answer: B

Section: (none)

Explanation

Explanation/Reference:

QUESTION 5

Which two web filtering inspection modes inspect the full URL? (Choose two.)

- A. DNS-based
- B. Proxy-based
- C. Flow-based
- D. URL-based

Correct Answer: BC

Section: (none)

Explanation

Explanation/Reference:

QUESTION 6

Which of the following statements are correct about the HA command `diagnose sys ha reset-uptime`? (Choose two.)

- A. The device this command is executed on is likely to switch from master to slave status if `override` is disabled.
- B. The device this command executed on is likely to switch from master to slave status if `override` is enabled.
- C. The command has no impact on the HA algorithm.
- D. This commands resets the uptime variable used in the HA algorithm so it may cause a new master to become elected.

Correct Answer: AD

Section: (none)

Explanation

Explanation/Reference:

QUESTION 7

Which statements are correct properties of a partial mesh VPN deployment. (Choose two.)

- A. VPN tunnels interconnect between every single location.
- B. VPN tunnels are not configured between every single location.
- C. Some location may be reachable via a hub location.
- D. It cannot contain redundant VPN tunnels.

Correct Answer: BC






Section: (none)

Explanation

Explanation/Reference:

QUESTION 8

Review the IPS sensor filter configuration shown in the exhibit.

Pattern Based Signatures and Filters				
 Create New  Edit  Delete				
▼ Severity	▼ Target	▼ OS	▼ Action	▼ Packet Logging
Critical	Server	Linux	 Block	

Based on the information in the exhibit, which statements are correct regarding the filter? (Choose two.)

- A. It does not log attacks targeting Linux servers.
- B. It matches all traffic to Linux servers.
- C. Its action will block traffic matching these signatures.
- D. It only takes affect when the sensor is applied to a policy.

Correct Answer: AC

Section: (none)

Explanation

Explanation/Reference:

QUESTION 9

Two devices are in an HA cluster, the device hostnames are STUDENT and REMOTE. Exhibit A shows the command output of `diagnose sys session stat` for the STUDENT device. Exhibit B shows the command output of `diagnose sys session stat` for the REMOTE device.

Exhibit A:

```
STUDENT # diagnose sys session stat
misc info:      session_count=166 setup_rate=68 exp_count=0 clash=0
               memory_tension_drop=0 ephemeral=0/57344 removeable=0 ha_scan=0
delete=0, flush=0, dev_down=0/0
TCP sessions:
      8 in ESTABLISHED state
      3 in SYN_SENT state
      1 in FIN_WAIT state
     139 in TIME_WAIT state
firewall error stat:
error1=00000000
error2=00000000
error3=00000000
error4=00000000
tt=00000000
cont=00000000
ids_rcv=00000000
url_rcv=00000000
av_rcv=00000000
fqdn_count=00000000
tcp reset stat:
      syncqf=0 acceptqf=0 no-listener=2 data=0 ses=0 ips=0
global: ses_limit=0 ses6_limit=0 rt_limit=0 rt6_limit=0

STUDENT # _
```

Exhibit B:

```

global: ses_limit=0 ses6_limit=0 rt_limit=0 rt6_limit=0

REMOTE # diagnose sys session stat
misc info:      session_count=11 setup_rate=0 exp_count=0 clash=4
               memory_tension_drop=0 ephemeral=0/57344 removeable=0  ha_scan=0
delete=0, flush=0, dev_down=0/0
TCP sessions:
               2 in ESTABLISHED state
               1 in SYN_SENT state
firewall error stat:
error1=00000000
error2=00000000
error3=00000000
error4=00000000
tt=00000000
cont=00000000
ids_recv=00000000
url_recv=00000000
av_recv=00000000
fqdn_count=00000000
tcp reset stat:
               syncqf=0 acceptqf=0 no-listener=7 data=0 ses=0 ips=0
global: ses_limit=0 ses6_limit=0 rt_limit=0 rt6_limit=0

REMOTE # _

```

Given the information provided in the exhibits, which of the following statements are correct? (Choose two.)

- A. STUDENT is likely to be the master device.
- B. Session-pickup is likely to be enabled.
- C. The cluster mode is active-passive.
- D. There is not enough information to determine the cluster mode.

Correct Answer: AD

Section: (none)

Explanation

Explanation/Reference:

QUESTION 10

Which UTM feature sends a UDP query to FortiGuard servers each time FortiGate scans a packet (unless the response is locally cached)?

- A. Antivirus
- B. VPN

- C. IPS
- D. Web Filtering

Correct Answer: D

Section: (none)

Explanation

Explanation/Reference:

QUESTION 11

A new version of FortiOS firmware has just been released. When you upload new firmware, which is true?

- A. If you upload the firmware image via the boot loader's menu from a TFTP server, it will not preserve the configuration. But if you upload new firmware via the GUI or CLI, as long as you are following a supported upgrade path, FortiOS will attempt to convert the existing configuration to be valid with any new or changed syntax.
- B. No settings are preserved. You must completely reconfigure.
- C. No settings are preserved. After the upgrade, you must upload a configuration backup file. FortiOS will ignore any commands that are not valid in the new OS. In those cases, you must reconfigure settings that are not compatible with the new firmware.
- D. You must use FortiConverter to convert a backup configuration file into the syntax required by the new FortiOS, then upload it to FortiGate.

Correct Answer: A

Section: (none)

Explanation

Explanation/Reference:

QUESTION 12

Which protocols can you use for secure administrative access to a FortiGate? (Choose two)

- A. SSH
- B. Telnet
- C. NTLM
- D. HTTPS

Correct Answer: AD

Section: (none)

Explanation

Explanation/Reference:

QUESTION 13

Which statements are correct regarding an IPv6 over IPv4 IPsec configuration? (Choose two.)

- A. The source quick mode selector must be an IPv4 address.
- B. The destination quick mode selector must be an IPv6 address.
- C. The *Local Gateway IP* must be an IPv4 address.
- D. The remote gateway IP must be an IPv6 address.

Correct Answer: BC

Section: (none)

Explanation

Explanation/Reference:

Reference: <http://docs.fortinet.com/uploaded/files/2712/fortigate-ipv6-54.pdf>

QUESTION 14

Which is not a FortiGate feature?

- A. Database auditing
- B. Intrusion prevention
- C. Web filtering
- D. Application control

Correct Answer: A

Section: (none)

Explanation

Explanation/Reference:

QUESTION 15

When an administrator attempts to manage FortiGate from an IP address that is not a trusted host, what happens?

- A. FortiGate will still subject that person's traffic to firewall policies; it will not bypass them.
- B. FortiGate will drop the packets and not respond.
- C. FortiGate responds with a block message, indicating that it will not allow that person to log in.

D. FortiGate responds only if the administrator uses a secure protocol. Otherwise, it does not respond

Correct Answer: B

Section: (none)

Explanation

Explanation/Reference:

QUESTION 16

A backup file begins with this line:

```
#config-version=FGVM64-5.02-FW-build589-140613:opmode=0:vdom=0:user=admin #conf_file_ver=3881503152630288414 #buildno=0589 #global_vdom=1
```

Can you restore it to a FortiWiFi 60D?

A. Yes

B. Yes, but only if you replace the "#conf_file_ver" line so that it contains the serial number of that specific FortiWiFi 60D.

C. Yes, but only if it is running the same version of FortiOS, or a newer compatible version.

D. No

Correct Answer: D

Section: (none)

Explanation

Explanation/Reference:

QUESTION 17

Acme Web Hosting is replacing one of their firewalls with a FortiGate. It must be able to apply port forwarding to their back-end web servers while blocking virus uploads and TCP SYN floods from attackers. Which operation mode is the best choice for these requirements?

A. NAT/route

B. NAT mode with an interface in one-arm sniffer mode

C. Transparent mode

D. No appropriate operation mode exists

Correct Answer: A

Section: (none)

Explanation

Explanation/Reference:

QUESTION 18

You have configured the DHCP server on a FortiGate's port1 interface (or internal, depending on the model) to offer IPs in a range of 192.168.1.65-192.168.1.253.

When the first host sends a DHCP request, what IP will the DHCP offer?

- A. 192.168.1.99
- B. 192.168.1.253
- C. 192.168.1.65
- D. 192.168.1.66

Correct Answer: C

Section: (none)

Explanation

Explanation/Reference:

QUESTION 19

You have created a new administrator account, and assign it the prof_admin profile. Which is false about that account's permissions?

- A. It cannot upgrade or downgrade firmware.
- B. It can create and assign administrator accounts to parts of its own VDOM.
- C. It can reset forgotten passwords for other administrator accounts such as "admin".
- D. It has a smaller permissions scope than accounts with the "super_admin" profile.

Correct Answer: A

Section: (none)

Explanation

Explanation/Reference:

QUESTION 20

If you have lost your password for the "admin" account on your FortiGate, how should you reset it?

- A. Log in with another administrator account that has "super_admin" profile permissions, then reset the password for the "admin" account.

- B. Reboot the FortiGate. Via the local console, during the boot loader, use the menu to format the flash disk and reinstall the firmware. Then you can log in with the default password.
- C. Power off the FortiGate. After several seconds, restart it. Via the local console, within 30 seconds after booting has completed, log in as "maintainer" and enter the CLI commands to set the password for the "admin" account.



<http://www.gratisexam.com/>

- D. Reboot the FortiGate. Via the local console, during the boot loader, use the menu to log in as "maintainer" and enter the CLI commands to set the password for the "admin" account.

Correct Answer: C

Section: (none)

Explanation

Explanation/Reference:

QUESTION 21

What are the ways FortiGate can monitor logs? (Choose three.)

- A. MIB
- B. SMS
- C. Alert Emails
- D. SNMP
- E. FortiAnalyzer
- F. Alert Message Console

Correct Answer: CDF

Section: (none)

Explanation

Explanation/Reference:

QUESTION 22

To which remote device can the FortiGate send logs? (Choose three.)

- A. Syslog

- B. FortiAnalyzer
- C. Hard drive
- D. Memory
- E. FortiCloud

Correct Answer: ABE

Section: (none)

Explanation

Explanation/Reference:

QUESTION 23

In a Crash log, what does a status of 0 indicate?

- A. Abnormal termination of a process
- B. A process closed for any reason
- C. Scanunitd process crashed
- D. Normal shutdown with no abnormalities
- E. DHCP process crashed

Correct Answer: D

Section: (none)

Explanation

Explanation/Reference:

QUESTION 24

There are eight (8) log severity levels that indicate the importance of an event. Not including Debug, which is only needed to log diagnostic data, what are both the lowest AND highest severity levels?

- A. Notification, Emergency
- B. Information, Critical
- C. Error, Critical
- D. Information, Emergency
- E. Information, Alert

Correct Answer: D

Section: (none)

Explanation

Explanation/Reference:

QUESTION 25

Examine this log entry.

What does the log indicate? (Choose three.)

date=2013-12-04 time=09:30:18 logid=0100032001 type=event subtype=system level=information vd="root" user="admin" ui=http(192.168.1.112) action=login status=success reason=none profile="super_admin" msg="Administrator admin logged in successfully from http(192.168.1.112)"

- A. In the GUI, the log entry was located under "Log & Report > Event Log > User".
- B. In the GUI, the log entry was located under "Log & Report > Event Log > System".
- C. In the GUI, the log entry was located under "Log & Report > Traffic Log > Local Traffic".
- D. The connection was encrypted.
- E. The connection was unencrypted.
- F. The IP of the FortiGate interface that "admin" connected to was 192.168.1.112.
- G. The IP of the computer that "admin" connected from was 192.168.1.112.

Correct Answer: BEG

Section: (none)

Explanation

Explanation/Reference:

QUESTION 26

Where are most of the security events logged?

- A. Security log
- B. Forward Traffic log
- C. Event log
- D. Alert log
- E. Alert Monitoring Console

Correct Answer: C

Section: (none)

Explanation

Explanation/Reference:

QUESTION 27

What determines whether a log message is generated or not?

- A. Firewall policy setting
- B. Log Settings in the GUI
- C. 'config log' command in the CLI
- D. Syslog
- E. Webtrends

Correct Answer: A

Section: (none)

Explanation

Explanation/Reference:

QUESTION 28

Which of the following are considered log types? (Choose three.)

- A. Forward log
- B. Traffic log
- C. Syslog
- D. Event log
- E. Security log

Correct Answer: BDE

Section: (none)

Explanation

Explanation/Reference:

QUESTION 29

What attributes are always included in a log header? (Choose three.)

- A. policyid
- B. level
- C. user
- D. time
- E. subtype
- F. duration

Correct Answer: BDE

Section: (none)

Explanation

Explanation/Reference:

QUESTION 30

What log type would indicate whether a VPN is going up or down?

- A. Event log
- B. Security log
- C. Forward log
- D. Syslog

Correct Answer: A

Section: (none)

Explanation

Explanation/Reference:

QUESTION 31

Which correctly define "Section View" and "Global View" for firewall policies? (Choose two.)

- A. Section View lists firewall policies primarily by their interface pairs.
- B. Section View lists firewall policies primarily by their sequence number.
- C. Global View lists firewall policies primarily by their interface pairs.
- D. Global View lists firewall policies primarily by their policy sequence number.
- E. The 'any' interface may be used with Section View.

Correct Answer: AD

Section: (none)

Explanation

Explanation/Reference:

QUESTION 32

What protocol cannot be used with the active authentication type?

- A. Local
- B. RADIUS
- C. LDAP
- D. RSO

Correct Answer: D

Section: (none)

Explanation

Explanation/Reference:

QUESTION 33

When configuring LDAP on the FortiGate as a remote database for users, what is not a part of the configuration?

- A. The name of the attribute that identifies each user (Common Name Identifier).
- B. The user account or group element names (user DN).
- C. The server secret to allow for remote queries (Primary server secret).
- D. The credentials for an LDAP administrator (password).

Correct Answer: C

Section: (none)

Explanation

Explanation/Reference:

QUESTION 34

In "diag debug flow" output, you see the message "Allowed by Policy-1: SNAT". Which is true?

- A. The packet matched the topmost policy in the list of firewall policies.
- B. The packet matched the firewall policy whose policy ID is 1.
- C. The packet matched a firewall policy, which allows the packet and skips UTM checks
- D. The policy allowed the packet and applied session NAT.

Correct Answer: B

Section: (none)

Explanation

Explanation/Reference:

QUESTION 35

Which is NOT true about the settings for an IP pool type port block allocation?

- A. A Block Size defines the number of connections.
- B. Blocks Per User defines the number of connection blocks for each user.
- C. An Internal IP Range defines the IP addresses permitted to use the pool.
- D. An External IP Range defines the IP addresses in the pool.

Correct Answer: B

Section: (none)

Explanation

Explanation/Reference:

QUESTION 36

Which define device identification? (Choose two.)

- A. Device identification is enabled by default on all interfaces.
- B. Enabling a source device in a firewall policy enables device identification on the source interfaces of that policy.
- C. You cannot combine source user and source device in the same firewall policy.
- D. FortiClient can be used as an agent based device identification technique.
- E. Only agentless device identification techniques are supported.

Correct Answer: BD

Section: (none)

Explanation

Explanation/Reference:

QUESTION 37

Which is true of FortiGate's session table?

- A. NAT/PAT is shown in the central NAT table, not the session table.
- B. It shows TCP connection states.
- C. It shows IP, SSL, and HTTP sessions.
- D. It does not show UDP or ICMP connection state codes, because those protocols are connectionless.

Correct Answer: B

Section: (none)

Explanation

Explanation/Reference:

QUESTION 38

Which is true about incoming and outgoing interfaces in firewall policies?

- A. A physical interface may not be used.
- B. A zone may not be used.
- C. Multiple interfaces may not be used for both incoming and outgoing.
- D. Source and destination interfaces are mandatory.

Correct Answer: D

Section: (none)

Explanation

Explanation/Reference:

QUESTION 39

For FortiGate devices equipped with Network Processor (NP) chips, which are true? (Choose three.)

- A. For each new IP session, the first packet always goes to the CPU.
- B. The kernel does not need to program the NPU. When the NPU sees the traffic, it determines by itself whether it can process the traffic

- C. Once offloaded, unless there are errors, the NP forwards all subsequent packets. The CPU does not process them.
- D. When the last packet is sent or received, such as a TCP FIN or TCP RST signal, the NP returns this session to the CPU for tear down.
- E. Sessions for policies that have a security profile enabled can be NP offloaded.

Correct Answer: ACD

Section: (none)

Explanation

Explanation/Reference:

QUESTION 40

Which traffic can match a firewall policy's "Services" setting? (Choose three.)



<http://www.gratisexam.com/>

- A. HTTP
- B. SSL
- C. DNS
- D. RSS
- E. HTTPS

Correct Answer: ACE

Section: (none)

Explanation

Explanation/Reference:

QUESTION 41

Which is NOT true about source matching with firewall policies?

- A. A source address object must be selected in the firewall policy.
- B. A source user/group may be selected in the firewall policy.
- C. A source device may be defined in the firewall policy.
- D. A source interface must be selected in the firewall policy.

E. A source user/group and device must be specified in the firewall policy.

Correct Answer: E

Section: (none)

Explanation

Explanation/Reference:

QUESTION 42

If you enable the option "Generate Logs when Session Starts", what effect does this have on the number of traffic log messages generated for each session?

- A. No traffic log message is generated.
- B. One traffic log message is generated.
- C. Two traffic log messages are generated.
- D. A log message is only generated if there is a security event.

Correct Answer: C

Section: (none)

Explanation

Explanation/Reference:

QUESTION 43

Which best describes the authentication timeout?

- A. How long FortiGate waits for the user to enter his or her credentials.
- B. How long a user is allowed to send and receive traffic before he or she must authenticate again.
- C. How long an authenticated user can be idle (without sending traffic) before they must authenticate again.
- D. How long a user-authenticated session can exist without having to authenticate again.

Correct Answer: C

Section: (none)

Explanation

Explanation/Reference:

QUESTION 44

Which authentication scheme is not supported by the RADIUS implementation on FortiGate?

- A. CHAP
- B. MSCHAP2
- C. PAP
- D. FSSO

Correct Answer: D

Section: (none)

Explanation

Explanation/Reference:

QUESTION 45

Which are valid replies from a RADIUS server to an ACCESS-REQUEST packet from a FortiGate? (Choose two.)

- A. ACCESS-CHALLENGE
- B. ACCESS-RESTRICT
- C. ACCESS-PENDING
- D. ACCESS-REJECT

Correct Answer: AD

Section: (none)

Explanation

Explanation/Reference:

QUESTION 46

Which authentication methods does FortiGate support for firewall authentication? (Choose two.)

- A. Remote Authentication Dial in User Service (RADIUS)
- B. Lightweight Directory Access Protocol (LDAP)
- C. Local Password Authentication
- D. POP3
- E. Remote Password Authentication

Correct Answer: AC

Section: (none)

Explanation

Explanation/Reference:

QUESTION 47

Which methods can FortiGate use to send a One Time Password (OTP) to Two-Factor Authentication users? (Choose three.)

- A. Hardware FortiToken
- B. Web Portal
- C. Email
- D. USB Token
- E. Software FortiToken (FortiToken mobile)

Correct Answer: ACE

Section: (none)

Explanation

Explanation/Reference:

QUESTION 48

Which user group types does FortiGate support for firewall authentication? (Choose three.)

- A. RSSO
- B. Firewall
- C. LDAP
- D. NTLM
- E. FSSO

Correct Answer: ABE

Section: (none)

Explanation

Explanation/Reference:

QUESTION 49

Which of the following statements is true regarding the differences between route-based and policy-based IPsec VPNs? (Choose two.)

- A. The firewall policies for policy-based are bidirectional. The firewall policies for route-based are unidirectional.
- B. In policy-based VPNs the traffic crossing the tunnel must be routed to the virtual IPsec interface. In route-based, it does not.
- C. The action for firewall policies for route-based VPNs may be Accept or Deny, for policy-based VPNs it is Encrypt.
- D. Policy-based VPN uses an IPsec interface, route-based does not.

Correct Answer: AC

Section: (none)

Explanation

Explanation/Reference:

QUESTION 50

Which portion of the configuration does an administrator specify the type of IPsec configuration (either policy-based or route-based)?

- A. Under the IPsec VPN global settings.
- B. Under the phase 2 settings.
- C. Under the phase 1 settings.
- D. Under the firewall policy settings.

Correct Answer: D

Section: (none)

Explanation

Explanation/Reference:

QUESTION 51

Which of the following options best defines what Diffie-Hellman is?

- A. A symmetric encryption algorithm.
- B. A "key-agreement" protocol.
- C. A "Security-association-agreement" protocol.
- D. An authentication algorithm.

Correct Answer: B

Section: (none)

Explanation

Explanation/Reference:

QUESTION 52

How many packets are interchanged between both IPSec ends during the negotiation of a main-mode phase 1?

- A. 5
- B. 3
- C. 2
- D. 6

Correct Answer: D

Section: (none)

Explanation

Explanation/Reference:

QUESTION 53

Which of the following IKE modes is the one used during the IPsec phase 2 negotiation?

- A. Aggressive mode
- B. Quick mode
- C. Main mode
- D. Fast mode

Correct Answer: B

Section: (none)

Explanation

Explanation/Reference:

QUESTION 54

Which of the following statements are true about IPsec VPNs? (Choose three.)

- A. IPsec increases overhead and bandwidth.
- B. IPsec operates at the layer 2 of the OSI model.

- C. End-user's network applications must be properly pre-configured to send traffic across the IPsec VPN.
- D. IPsec protects upper layer protocols.
- E. IPsec operates at the layer 3 of the OSI model.

Correct Answer: ADE

Section: (none)

Explanation

Explanation/Reference:

QUESTION 55

What is longest length of time allowed on a FortiGate device for the virus scan to complete?

- A. 20 seconds
- B. 30 seconds
- C. 45 seconds
- D. 10 seconds

Correct Answer: B

Section: (none)

Explanation

Explanation/Reference:

QUESTION 56

Which of the following statements is true regarding the TCP SYN packets that go from a client, through an implicit web proxy (transparent proxy), to a web server listening at TCP port 80? (Choose three.)

- A. The source IP address matches the client IP address.
- B. The source IP address matches the proxy IP address.
- C. The destination IP address matches the proxy IP address.
- D. The destination IP address matches the server IP addresses.
- E. The destination TCP port number is 80.

Correct Answer: ADE

Section: (none)

Explanation

Explanation/Reference:

QUESTION 57

Which of the following statements is true regarding the use of a PAC file to configure the web proxy settings in an Internet browser? (Choose two.)

- A. More than one proxy is supported.
- B. Can contain a list of destinations that will be exempt from the use of any proxy.
- C. Can contain a list of URLs that will be exempted from the FortiGate web filtering inspection.
- D. Can contain a list of users that will be exempted from the use of any proxy.

Correct Answer: BC

Section: (none)

Explanation

Explanation/Reference:

QUESTION 58

An Internet browser is using the WPAD DNS method to discover the PAC file's URL. The DNS server replies to the browser's request with the IP address 10.100.1.10. Which URL will the browser use to download the PAC file?

- A. http://10.100.1.10/proxy.pac
- B. https://10.100.1.10/
- C. http://10.100.1.10/wpad.dat
- D. https://10.100.1.10/proxy.pac

Correct Answer: C

Section: (none)

Explanation

Explanation/Reference:

QUESTION 59

Which of the following are benefits of using web caching? (Choose three.)

- A. Decrease bandwidth utilization
- B. Reduce server load

- C. Reduce FortiGate CPU usage
- D. Reduce FortiGate memory usage
- E. Decrease traffic delay

Correct Answer: ABE

Section: (none)

Explanation

Explanation/Reference:

QUESTION 60

Review the exhibit of an explicit proxy policy configuration.

<div> Create New Edit Delete Expand All Collapse All </div> <div> <input type="text" value="Search"/> </div>								
Seq.#	To	Source	Destination	Users	Schedule	Action	AV	
▼ web (1 - 2)								
1	port1	10.0.1.0/24	all			✓ ACCEPT		
1.1				Student	always			
2	port1	10.0.0.0/8	all		always	✓ ACCEPT		

If there is a proxy connection attempt coming from the IP address 10.0.1.5, and from a user that has not authenticated yet, what action does the FortiGate proxy take?

- A. User is prompted to authenticate. Traffic from the user Student will be allowed by the policy #1. Traffic from any other user will be allowed by the policy #2.
- B. User is not prompted to authenticate. The connection is allowed by the proxy policy #2.
- C. User is not prompted to authenticate. The connection will be allowed by the proxy policy #1.
- D. User is prompted to authenticate. Only traffic from the user Student will be allowed. Traffic from any other user will be blocked.

Correct Answer: D

Section: (none)

Explanation

Explanation/Reference:

QUESTION 61

Which protocol can an Internet browser use to download the PAC file with the web proxy configuration?

- A. HTTPS
- B. FTP
- C. TFTP
- D. HTTP

Correct Answer: D

Section: (none)

Explanation

Explanation/Reference:

QUESTION 62

Which are the three different types of Conserve Mode that can occur on a FortiGate device? (Choose three.)

- A. Proxy
- B. Operating system
- C. Kernel
- D. System
- E. Device

Correct Answer: ACD

Section: (none)

Explanation

Explanation/Reference:

QUESTION 63

Files reported as "suspicious" were subject to which Antivirus check"?

- A. Grayware

- B. Virus
- C. Sandbox
- D. Heuristic

Correct Answer: D

Section: (none)

Explanation

Explanation/Reference:

QUESTION 64

Which type of conserve mode writes a log message immediately, rather than when the device exits conserve mode?

- A. Kernel
- B. Proxy
- C. System
- D. Device

Correct Answer: B

Section: (none)

Explanation

Explanation/Reference:

QUESTION 65

Files that are larger than the oversized limit are subjected to which Antivirus check?

- A. Grayware
- B. Virus
- C. Sandbox
- D. Heuristic

Correct Answer: C

Section: (none)

Explanation

Explanation/Reference:

QUESTION 66

A FortiGate device is configured to perform an AV & IPS scheduled update every hour.

```
Virus Definitions
-----
Version: 21.00487
Contract Expiry Date: Tue Apr 29 00:00:00 2014
Last Updated using scheduled update on Mon Jan
20 01:05:33 2014
Last Update Attempt: Mon Jan 20 10:08:56 2014
Result: Updates Installed
```

```
FG100D3G12800939 # exe time
current time is: 10:35:35
last ntp sync: Mon Jan 20 09:51:59 2014
```

Given the information in the exhibit, when will the next update happen?

- A. 01:00
- B. 02:05
- C. 11:00
- D. 11:08

Correct Answer: D

Section: (none)

Explanation

Explanation/Reference:

QUESTION 67

What is the maximum number of different virus databases a FortiGate can have?

- A. 5

- B. 2
- C. 3
- D. 4

Correct Answer: B

Section: (none)

Explanation

Explanation/Reference:

QUESTION 68

Which of the following are possible actions for static URL filtering? (Choose three.)

- A. Allow
- B. Block
- C. Exempt
- D. Warning
- E. Shape

Correct Answer: ABC

Section: (none)

Explanation

Explanation/Reference:

QUESTION 69

Which of the following statements are true regarding the web filtering modes? (Choose two.)

- A. Proxy based mode allows for customizable block pages to display when sites are prevented.
- B. Proxy based mode requires more resources than flow-based.
- C. Flow based mode offers more settings under the advanced configuration section of the GUI.
- D. Proxy based mode offers higher throughput than flow-based mode.

Correct Answer: AB

Section: (none)

Explanation

Explanation/Reference:

QUESTION 70

Which of the following web filtering modes can inspect the full URL? (Choose two.)

- A. Proxy based
- B. DNS based
- C. Policy based
- D. Flow based

Correct Answer: AD

Section: (none)

Explanation

Explanation/Reference:

QUESTION 71

Examine the following log message attributes and select two correct statements from the list below. (Choose two.)

hostname=www.youtube.com filetype="Webfilter_Profile" profile="default" status="passthrough" msg="URL belongs to a category with warnings enabled"

- A. The traffic was blocked.
- B. The user failed authentication.
- C. The category action was set to warning.
- D. The website was allowed

Correct Answer: CD

Section: (none)

Explanation

Explanation/Reference:

QUESTION 72

Which of the following are possible actions for FortiGuard web category filtering? (Choose three.)

- A. Allow
- B. Block

- C. Exempt
- D. Warning
- E. Shape

Correct Answer: ABD

Section: (none)

Explanation

Explanation/Reference:

QUESTION 73

Which of the following actions can be used with the FortiGuard quota feature? (Choose three.)

- A. Allow
- B. Block
- C. Monitor
- D. Warning
- E. Authenticate

Correct Answer: CDE

Section: (none)

Explanation

Explanation/Reference:

QUESTION 74

Which of the following statements are true regarding application control? (Choose two.)

- A. Application control is based on TCP destination port numbers.
- B. Application control is proxy based.
- C. Encrypted traffic can be identified by application control.
- D. Traffic shaping can be applied to the detected application traffic.

Correct Answer: CD

Section: (none)

Explanation

Explanation/Reference:

QUESTION 75

In the debug command output shown in the exhibit, which of the following best described the MAC address 00:09:0f:69:03:7e ?

```
# diagnose ip arp list
index=2 ifname=port1 172.20.187.150 00:09:0f:69:03:7e
state=00000004 use=4589 confirm=4589 update=2422 ref=1
```

- A. It is one of the secondary MAC addresses of the port1 interface.
- B. It is the primary MAC address of the port interface.
- C. It is the MAC address of another network devices located in the same LAN segment as the FortiGate unit's port1 interface.
- D. It is the HA virtual MAC address.

Correct Answer: C

Section: (none)

Explanation

Explanation/Reference:

QUESTION 76

Which action does the FortiGate take when link health monitor times out?

- A. All routes to the destination subnet configured in the link health monitor are removed from the routing table.
- B. The distance values of all routes using interface configured in the link health monitor are increased.
- C. The priority values of all routes using configured in the link health monitor are increased.
- D. All routes using the next-hop gateway configured in the link health monitor are removed from the routing table.

Correct Answer: D

Section: (none)

Explanation

Explanation/Reference:

QUESTION 77

What must be configured in order to keep two static routes to the same destination in the routing table?

- A. The same priority.
- B. The same distance and same priority.
- C. The same distance.
- D. The same metric.

Correct Answer: B

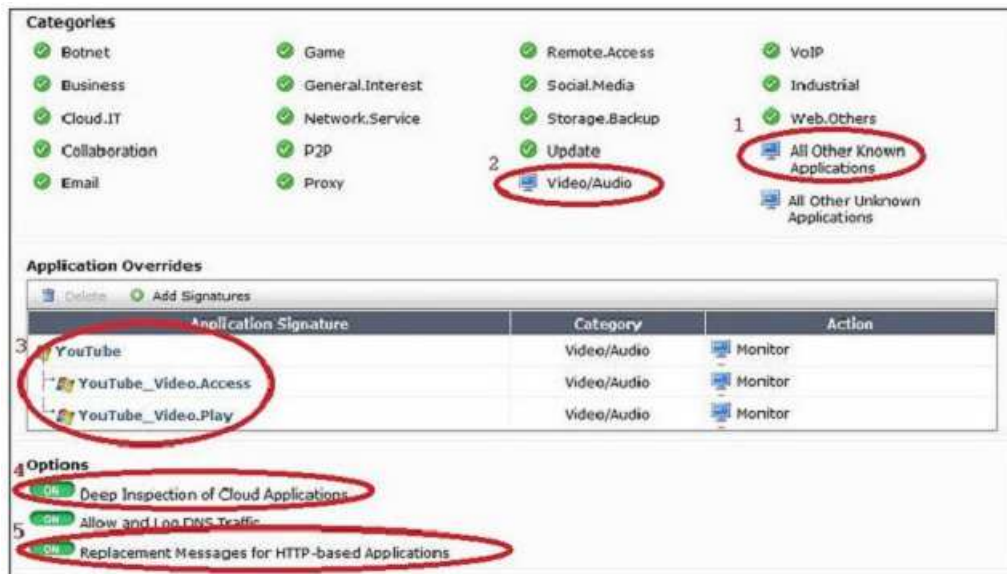
Section: (none)

Explanation

Explanation/Reference:

QUESTION 78

The exhibit is a screen shot of an Application Control profile.



Different settings are circled and numbered. Select the number identifying the setting which will provide additional information about YouTube access, such as the name of the video watched.

- A. 1
- B. 2
- C. 3
- D. 4
- E. 5

Correct Answer: D

Section: (none)

Explanation

Explanation/Reference:

QUESTION 79

How do application control signatures update on a FortiGate device?

- A. Through FortiGuard updates.
- B. Upgrade the FortiOS firmware to a newer release.
- C. By running the Application Control auto-learning feature.
- D. Signatures are hard coded to the device and cannot be updated.

Correct Answer: A

Section: (none)

Explanation

Explanation/Reference:

QUESTION 80

Which answer best describes what an "Unknown Application" is?



- A. All traffic that matches the internal signature for unknown applications.
- B. Traffic that does not match the RFC pattern for its protocol.
- C. Any traffic that does not match an application control signature

D. A packet that fails the CRC check.

Correct Answer: C

Section: (none)

Explanation

Explanation/Reference:

QUESTION 81

What actions are possible with Application Control? (Choose three.)

- A. Warn
- B. Allow
- C. Block
- D. Traffic Shaping
- E. Quarantine

Correct Answer: BCD

Section: (none)

Explanation

Explanation/Reference:

QUESTION 82

Which of the following statements are true regarding application control? (choose two)

- A. Application control is based on TCP destination port numbers.
- B. Application control is proxy based.
- C. Encrypted traffic can be identified by application control.
- D. Traffic Shaping can be applied to the detected application traffic.

Correct Answer: CD

Section: (none)

Explanation

Explanation/Reference:

QUESTION 83

Which of the following fields contained in the IP/TCP/UDP headers can be used to make a routing decision when using policy-based routing? (Choose three)

- A. Source IP address.
- B. TCP flags
- C. Source TCP/UDP ports
- D. Type of service.
- E. Checksum

Correct Answer: ACD

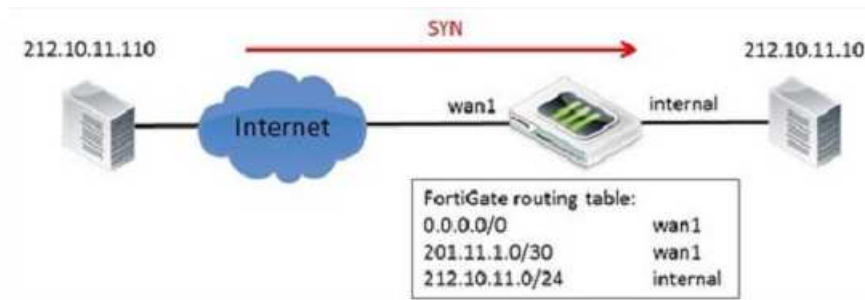
Section: (none)

Explanation

Explanation/Reference:

QUESTION 84

Examine the network topology diagram in the exhibit; the workstation with the IP address 212.10.11.110 sends a TCP SYN packet to the workstation with the IP address 212.10.11.20.



Which of the following sentences best describes the result of the reverse path forwarding (RPF) check executed by the FortiGate on the SYN packets? (Choose two).

- A. Packets is allowed if RPF is configured as loose.
- B. Packets is allowed if RPF is configured as strict.
- C. Packets is blocked if RPF is configured as loose.
- D. Packets is blocked if RPF is configured as strict.

Correct Answer: AD

Section: (none)

Explanation

Explanation/Reference:

QUESTION 85

Which of the following statements best describe what a FortiGate does when packets match a black hole route?

- A. Packets are dropped.
- B. Packets are routed based on the information in the policy-based routing table.
- C. An ICMP error message is sent back to the originator.
- D. Packet are routed back to the originator.

Correct Answer: A

Section: (none)

Explanation

Explanation/Reference:

QUESTION 86

The exhibit shows two static routes to the same destinations subnet 172.20.168.0/24.

```
#config router static
edit 1
    set dst 172.20.168.0 255.255.255.0
    set distance 10
    set priority 20
    set device port1
next
edit 2
    set dst 172.20.168.0 255.255.255.0
    set distance 20
    set priority 20
    set device port2
next
end
```


Which of the following statements correctly describes this static routing configuration? (choose two)

- A. Both routes will show up in the routing table.
- B. The FortiGate unit will evenly share the traffic to 172.20.168.0/24 between routes.
- C. Only one route will show up in the routing table.
- D. The FortiGate will route the traffic to 172.20.168.0/24 only through one route.

Correct Answer: CD

Section: (none)

Explanation

Explanation/Reference:

QUESTION 87

Which of the following statements are true regarding WAN Link Load Balancing? (Choose two).

- A. There can be only one virtual WAN Link per VDOM.
- B. FortiGate can measure the quality of each link based on latency, jitter, or packets percentage.
- C. Link health checks can be performed over each link member if the virtual WAN interface.
- D. Distance and priority values are configured in each link member if the virtual WAN interface.

Correct Answer: AC

Section: (none)

Explanation

Explanation/Reference:

QUESTION 88

The exhibit shows three static routes.

```
config router static
  edit 1
    set dst 172.20.168.0 255.255.255.0
    set distance 10
    set priority 10
    set device port1
  next
  edit 2
    set dst 172.20.0.0 255.255.0.0
    set distance 5
    set priority 20
    set device port2
  next
  edit 3
    set dst 172.20.0.0 255.255.0.0
    set distance 5
    set priority 20
    set device port3
  next
end
```

Which routes will be used to route the packets to the destination IP address 172.20.168.1?

- A. The route with the ID number 2 and 3.
- B. Only the route with the ID number 3.
- C. Only the route with the ID number 2.
- D. Only the route with the ID number 1.

Correct Answer: D

Section: (none)

Explanation

Explanation/Reference:

QUESTION 89

The exhibit shows a FortiGate routing table.

```
# get router info routing-table all
Codes: K - kernel, C - connected, S - static, R - RIP, B - BGP
       O - OSPF, IA - OSPF inter area
       E1 - OSPF external type 1, E2 - OSPF external type 2
       * - candidate default
O*E2  0.0.0.0/0 [110/10] via 192.168.11.254, wan1, 01:29:24
C      172.16.78.0/24 is directly connected, wan2
O      192.168.1.0/24 [110/200] via 192.168.11.59, internal, 01:30:28
C      192.168.3.0/24 is directly connected, dmz
C      192.168.11.0/24 is directly connected, internal
```

Which of the following statements are correct?(Choose two)

- A. There is only one active default route.
- B. The distance values for the route to 192.168.1.0/24 is 200
- C. An IP address in the subnet 172.16.78.0/24 has been assigned to the dmz interface.
- D. The FortiGate will route the traffic to 172.17.1.2 to next hop with the IP address 192.168.11.254

Correct Answer: AD

Section: (none)

Explanation

Explanation/Reference:

QUESTION 90

A FortiGate device has two VDOMs in NAT/route mode. Which of the following solutions can be implemented by a network administrator to route traffic between the two VDOMs.(Choose two)

- A. Use the inter-VDOMs links automatically created between all VDOMS.
- B. Manually create and configure an inter-VDOM link between yours.
- C. Interconnect and configure an external physical interface in one VDOM to another physical interface in the second VDOM.
- D. Configure both VDOMs to share the same table.

Correct Answer: BC

Section: (none)

Explanation

Explanation/Reference:

QUESTION 91

A FortiGate device is configured with two VDOMs. The management VDOM is 'root' , and is configured in transparent mode,'vdom1' is configured as NAT/route mode. Which traffic is generated only by 'root' and not 'vdom1'? (Choose three.)

- A. SNMP traps
- B. FortiGuard
- C. ARP
- D. NTP
- E. ICMP redirect

Correct Answer: ABD

Section: (none)

Explanation

Explanation/Reference:

QUESTION 92

Which of the following settings can be configured per VDOM? (Choose three)

- A. Operating mode (NAT/route or transparent)
- B. Static routes
- C. Hostname
- D. System time
- E. Firewall Policies

Correct Answer: ABE

Section: (none)

Explanation

Explanation/Reference:

QUESTION 93

Which of the following statements are correct regarding FortiGate virtual domains (VDOMs)? (Choose two)

- A. VDOMs divide a single FortiGate unit into two or more independent firewall.
- B. A management VDOM handles SNMP, logging, alert email and FortiGuard updates.
- C. Each VDOM can run different firmware versions.
- D. Administrative users with a 'super_admin' profile can administrate only one VDOM.

Correct Answer: AB

Section: (none)

Explanation

Explanation/Reference:

QUESTION 94

Which of the following statements is correct concerning multiple vdoms configured in a FortiGate device?

- A. FortiGate devices, from the FGT/FWF 60D and above, all support VDOMS.
- B. All FortiGate devices scale to 250 VDOMS.
- C. Each VDOM requires its own FortiGuard license.
- D. FortiGate devices support more NAT/route VDOMs than Transparent Mode VDOMs.

Correct Answer: A

Section: (none)

Explanation

Explanation/Reference:

QUESTION 95

A FortiGate unit has multiple VDOMs in NAT/route mode with multiple VLAN interfaces in each VDOM. Which of the following statements is correct regarding the IP addresses assigned to each VLAN interface?

- A. Different VLANs can share the same IP address as long as they have different VLAN IDs.
- B. Different VLANs can share the same IP address as long as they are in different physical interface.
- C. Different VLANs can share the same IP address as long as they are in different VDOMs.
- D. Different VLANs can never share the same IP addresses.

Correct Answer: C

Section: (none)

Explanation

Explanation/Reference:

QUESTION 96

A FortiGate unit operating in NAT/route mode and configured with two sub-interface on the same physical interface. Which of the following statement is correct regarding the VLAN IDs in this scenario?

- A. The two VLAN sub-interfaces can have the same VLAN IDs only if they have IP addresses in different subnets.
- B. The two VLAN sub-interfaces must have different VLAN IDs.
- C. The two VLAN sub-interfaces can have VLAN ID only if they belong to different VDOMs.
- D. The two VLAN sub-interfaces can have the same VLAN if they are connected to different L2 IEEE 802.1Q compliant switches.

Correct Answer: B

Section: (none)

Explanation

Explanation/Reference:

QUESTION 97

A FortiGate devices is configured with four VDOMs: 'root' and 'vdom1' are in NAT/route mode; 'vdom2' and 'vdom2' are in transparent mode. The management VDOM is 'root'. Which of the following statements are true? (Choose two.)

- A. An inter-VDOM link between 'root' and 'vdom1' can be created.
- B. An inter-VDOM link between 'vdom1' and vdom2' can created.
- C. An inter-VDOM link between 'vdom2' and vdom3' can created.
- D. Inter-VDOM link links must be manually configured for FortiGuard traffic.

Correct Answer: AB

Section: (none)

Explanation

Explanation/Reference:

QUESTION 98

Which of the following statements is true regarding a FortiGate device operating in transparent mode? (Choose three.)

- A. It acts as a layer 2 bridge
- B. It acts as a layer 3 router
- C. It forwards frames using the destination MAC address.
- D. It forwards packets using the destination IP address.
- E. It can perform content inspection (antivirus, web filtering, etc)

Correct Answer: ACE

Section: (none)

Explanation

Explanation/Reference:

QUESTION 99

Which of the following statements are correct concerning IPsec dialup VPN configurations for FortiGate devices? (Choose two)

- A. Main mode must be used when there is no more than one IPsec dialup VPN configured on the same FortiGate device.
- B. A FortiGate device with an IPsec VPN configured as dialup can initiate the tunnel connection to any remote IP address.
- C. Peer ID must be used when there is more than one aggressive-mode IPsec dialup VPN on the same FortiGate device.
- D. The FortiGate will automatically add a static route to the source quick mode selector address received from each remote peer.

Correct Answer: CD

Section: (none)

Explanation

Explanation/Reference:

QUESTION 100

Which of the following combinations of two FortiGate device configurations (side A and side B), can be used to successfully establish an IPsec VPN between them? (choose two)



- A. Side A: main mode, remote gateway as static IP address, policy based VPN. Side B: aggressive mode, remote Gateway as static IP address policy-based VPN.
- B. Side A: main mode, remote gateway as static IP address, policy based VPN. Side B: main mode, remote gateway as static IP address, route-based VPN

- C. Side A: main mode, remote gateway as static IP address, policy based VPN. Side B: main mode, remote gateway as dialup, route-based VPN.
D. Side A: main mode, remote gateway as dialup policy based VPN, Side B: main mode, remote gateway as dialup, policy based VPN.

Correct Answer: BC

Section: (none)

Explanation

Explanation/Reference:

QUESTION 101

Which of the following statements are correct differences between NAT/route and transparent mode? (Choose two.)

- A. In transparent mode, interfaces do not have IP addresses.
- B. Firewall policies are only used in NAT/ route mode.
- C. Static routers are only used in NAT/route mode.
- D. Only transparent mode permits inline traffic inspection at layer 2.

Correct Answer: AC

Section: (none)

Explanation

Explanation/Reference:

QUESTION 102

Which of the following are operating mode supported in FortiGate devices? (Choose two)

- A. Proxy
- B. Transparent
- C. NAT/route
- D. Offline inspection

Correct Answer: BC

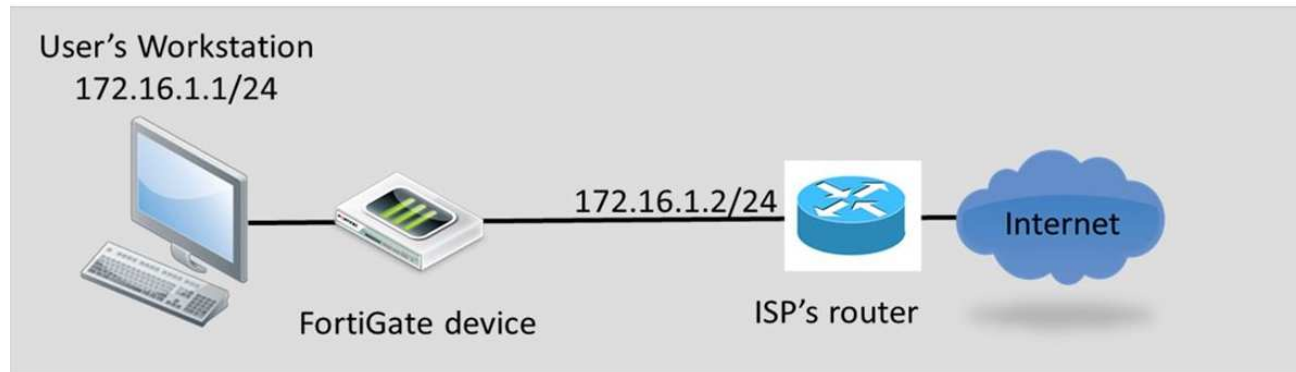
Section: (none)

Explanation

Explanation/Reference:

QUESTION 103

Review to the network topology in the exhibit.



The workstation, 172.16.1.1/24, connects to port2 of the FortiGate device, and the ISP router, 172.16.1.2, connects to port1. Without changing IP addressing, which configuration changes are required to properly forward users traffic to the Internet?(Choose two)

- A. At least one firewall policy from port2 to port1 to allow outgoing traffic.
- B. A default route configured in the FortiGuard devices pointing to the ISP's router.
- C. Static or dynamic IP addresses in both FortiGate interfaces port1 and port2.
- D. The FortiGate devices configured in transparent mode.

Correct Answer: AD

Section: (none)

Explanation

Explanation/Reference:

QUESTION 104

Which of the following statement correct describes the use of the "diagnose sys ha reset-uptime" command?

- A. To force an HA failover when the HA override setting is disabled.
- B. To force an HA failover when the HA override setting is enabled.
- C. To clear the HA counters.
- D. To restart a FortiGate unit that is part of an HA cluster.

Correct Answer: A

Section: (none)

Explanation

Explanation/Reference:

QUESTION 105

What are required to be the same for two FortiGate units to form an HA cluster? (Choose two)

- A. Firmware.
- B. Model.
- C. Hostname.
- D. System time zone.

Correct Answer: AB

Section: (none)

Explanation

Explanation/Reference:

QUESTION 106

Which of the following statements describes the objectives of the gratuitous ARP packets sent by an HA cluster?

- A. To synchronize the ARP tables in all the FortiGate Units that are part of the HA cluster.
- B. To notify the network switches that a new HA master unit has been elected.
- C. To notify the master unit that the slave devices are still up and alive.
- D. To notify the master unit about the physical MAC addresses of the slave units.

Correct Answer: B

Section: (none)

Explanation

Explanation/Reference:

QUESTION 107

Which of the following statements are correct regarding a master HA unit? (Choose two)

- A. There should be only one master unit in each HA virtual cluster.
- B. The Master synchronizes cluster configuration with slaves.
- C. Only the master has a reserved management HA interface.
- D. Heartbeat interfaces are not required on a master unit.

Correct Answer: AB

Section: (none)

Explanation

Explanation/Reference:

QUESTION 108

Which statement describes how traffic flows in sessions handled by a slave unit in an active-active HA cluster?

- A. Packets are sent directly to the slave unit using the slave physical MAC address.
- B. Packets are sent directly to the slave unit using the HA virtual MAC address.
- C. Packets arrive at both units simultaneously, but only the slave unit forwards the session.
- D. Packets are first sent to the master unit, which then forwards the packets to the slave unit.

Correct Answer: D

Section: (none)

Explanation

Explanation/Reference:

QUESTION 109

Which of the following statements are correct concerning the FortiGate session life support protocol? (Choose two)

- A. By default, UDP sessions are not synchronized.
- B. Up to four FortiGate devices in standalone mode are supported.
- C. Only the master unit handles the traffic.
- D. Allows per-VDOM session synchronization.

Correct Answer: AD

Section: (none)

Explanation

Explanation/Reference:

QUESTION 110

What is the default criteria for selecting the HA master unit in a HA cluster?

- A. port monitor, priority, uptime, serial number
- B. Port monitor, uptime, priority, serial number
- C. Priority, uptime, port monitor, serial number
- D. uptime, priority, port monitor, serial number

Correct Answer: B

Section: (none)

Explanation

Explanation/Reference:

QUESTION 111

What information is synchronized between two FortiGate units that belong to the same HA cluster? (Choose three)

- A. IP addresses assigned to DHCP enabled interface.
- B. The master devices hostname.
- C. Routing configured and state.
- D. Reserved HA management interface IP configuration.
- E. Firewall policies and objects.

Correct Answer: ACE

Section: (none)

Explanation

Explanation/Reference:

QUESTION 112

Which of the following statements are correct concerning the IPsec phase 1 and phase 2, shown in the exhibit? (choose two)

Peer Options

Accept Types

This peer ID ▼

Peer ID

fortinet

Phase 1 Proposal

+ Add

Encryption

3DES ▼

Authentication

SHA1 ▼

Diffie-Hellman Groups

☐ 21
☐ 20
☐ 19
☐ 18
☐ 17
☐ 16
☐ 15
☒ 14
☒ 5
☐ 2
☐ 1

Key Lifetime (seconds)

86400

Local ID

XAUTH

Type

Disabled ▼

Phase 2 Selectors

+ Add

Name	Local Address	Remote Address
	0.0.0.0/0.0.0.0	0.0.0.0/0.0.0.0

- A. The quick mode selector in the remote site must also be 0.0.0.0/0 for the source and destination addresses.
- B. Only remote peers with the peer ID 'fortinet' will be able to establish a VPN.
- C. The FortiGate device will automatically add a static route to the source quick mode selector address received from each remote VPN peer.
- D. The configuration will work only to establish FortiClient-to-FortiGate tunnels. A FortiGate tunnel requires a different configuration.

Correct Answer: CD

Section: (none)

Explanation

Explanation/Reference:

QUESTION 113

The exhibit shows a part output of the diagnostic command 'diagnose debug application ike 255', taken during establishment of a VPN. Which of the following statement are correct concerning this output? (choose two)

```
Ike 0:Remote:7:22: responder received first quick-mode message
ike 0:Remote:7:22: peer proposal is: peer:0:0.0.0.0-255.255.255.255:0, me:0:0.0.0.0-255.255.255.255:0
ike 0:Remote:7: sent IKE msg (quick_r1send): 172.20.186.222:500->172.20.187.114:500, len=356
ike 0: comes 172.20.187.114:500->172.20.186.222:500,ifindex=2....
ike 0:Remote:7:P2:22: replay protection enabled
ike 0:Remote:7:P2:22: SA life soft seconds=1750.
ike 0:Remote:7:P2:22: SA life hard seconds=1800.
ike 0:Remote:7:P2:22: IPsec SA selectors #src=1 #dst=1
ike 0:Remote:7:P2:22: src 0 7 0:0.0.0.0-255.255.255.255:0
ike 0:Remote:7:P2:22: dst 0 7 0:0.0.0.0-255.255.255.255:0
ike 0:Remote:7:P2:22: add IPsec SA: SPIs=6e13ca19/8f1ce9ae
ike 0:Remote:7:P2:22: added IPsec SA: SPIs=6e13ca19/8f1ce9ae
ike 0:Remote:7:P2:22: sending SNMP tunnel UP trap
```

- A. The quick mode selectors negotiated between both IPsec VPN peers is 0.0.0.0/32 for both source and destination addresses.
- B. The output corresponds to a phase 2 negotiation
- C. NAT-T enabled and there is third device in the path performing NAT of the traffic between both IPsec VPN peers.
- D. The IP address of the remote IPsec VPN peer is 172.20.187.114

Correct Answer: BD

Section: (none)

Explanation

Explanation/Reference:

QUESTION 114

What is required in a FortiGate configuration to have more than one dialup IPsec VPN using aggressive mode?

- A. All the aggressive mode dialup VPNs MUST accept connections from the same peer ID.
- B. Each peer ID MUST match the FQDN of each remote peer.
- C. Each aggressive mode dialup MUST accept connections from different peer ID.

D. The peer ID setting must NOT be used.

Correct Answer: C

Section: (none)

Explanation

Explanation/Reference:

QUESTION 115

Which of the following statements are correct concerning IKE mode config? (Choose two)

- A. It can dynamically assign IP addresses to IPsec VPN clients.
- B. It can dynamically assign DNS settings to IPsec VPN clients.
- C. It uses the ESP protocol.
- D. It can be enabled in the phase 2 configuration.

Correct Answer: AB

Section: (none)

Explanation

Explanation/Reference:

QUESTION 116

Which statement is correct concerning an IPsec VPN with the remote gateway setting configured as 'Dynamic DNS'?

- A. The FortiGate will accept IPsec VPN connection from any IP address.
- B. The FQDN resolution of the local FortiGate IP address where the VPN is terminated must be provided by a dynamic DNS provider.
- C. The FortiGate will Accept IPsec VPN connections only from IP addresses included on a dynamic DNS access list.
- D. The remote gateway IP address can change dynamically.

Correct Answer: D

Section: (none)

Explanation

Explanation/Reference:

QUESTION 117

Which of the following protocols are defined in the IPsec Standard? (Choose two)

- A. AH
- B. GRE
- C. SSL/TLS
- D. ESP

Correct Answer: AD

Section: (none)

Explanation

Explanation/Reference:

QUESTION 118

Which statement concerning IPS is false?

- A. IPS packages contain an engine and signatures used by both IPS and other flow-based scans.
- B. One-arm topology with sniffer mode improves performance of IPS blocking.
- C. IPS can detect zero-day attacks.
- D. The status of the last service update attempt from FortiGuard IPS is shown on System>Config>FortiGuard and in output from 'diag autoupdate version'

Correct Answer: D

Section: (none)

Explanation

Explanation/Reference:

QUESTION 119

Which best describes the mechanism of a TCP SYN flood?

- A. The attackers keeps open many connections with slow data transmission so that other clients cannot start new connections.
- B. The attackers sends a packets designed to sync with the FortiGate
- C. The attacker sends a specially crafted malformed packet, intended to crash the target by exploiting its parser.
- D. The attacker starts many connections, but never acknowledges to fully form them.

Correct Answer: D

Section: (none)

Explanation

Explanation/Reference:

QUESTION 120

Which profile could IPS engine use on an interface that is in sniffer mode? (Choose three)



- A. Antivirus (flow based)
- B. Web filtering (PROXY BASED)
- C. Intrusion Protection
- D. Application Control
- E. Endpoint control

Correct Answer: ABD

Section: (none)

Explanation

Explanation/Reference:

Reference: https://www.fortinet.com/sites/default/files/productdatasheets/fortios-5-4-datasheet_2.pdf (page 10 - offline inspection)

QUESTION 121

Which operating system vulnerability can you protect when selecting signatures to include in an IPS sensor? (choose three)

- A. Irix
- B. QNIX
- C. Linux
- D. Mac OS
- E. BSD

Correct Answer: CDE

Section: (none)

Explanation

Explanation/Reference:

Reference: http://docs.fortinet.com/uploaded/files/1082/fortigate-security_profiles-50.pdf (page 59)

QUESTION 122

You are creating a custom signature. Which has incorrect syntax?

- A. F-SBID(--attack_id 1842,--name "Ping.Death";--protocol icmp; --data_size>32000;)
- B. F-SBID(--name "Block.SMTP.VRFY.CMD";--pattern "vrfy";-- service SMTP; --no_case;--context header;)
- C. F-SBID(--name "Ping.Death";--protocol icmp;--data_size>32000;)
- D. F-SBID(--name "Block".HTTP.POST"; --protocol tcp;-- service HTTP;-- flow from_client; --pattern "POST"; -- context uri;--within 5,context;)

Correct Answer: A

Section: (none)

Explanation

Explanation/Reference:

Reference: <https://forum.fortinet.com/tm.aspx?m=110493>

QUESTION 123

Which best describe the mechanism of a TCP SYN flood?

- A. The attacker keeps open many connections with slow data transmission so that other clients cannot start new connections.
- B. The attacker sends a packet designed to "sync" with the FortiGate.
- C. The attacker sends a specially crafted malformed packet, intended to crash the target by exploiting its parser.
- D. The attacker starts many connections, but never acknowledges to fully form them.

Correct Answer: D

Section: (none)

Explanation

Explanation/Reference:

QUESTION 124

Which statement is correct concerning creating a custom signature?

- A. It must start with the name
- B. It must indicate whether the traffic flow is from the client or the server.
- C. It must specify the protocol. Otherwise, it could accidentally match lower-layer protocols.
- D. It is not supported by Fortinet Technical Support.

Correct Answer: A

Section: (none)

Explanation

Explanation/Reference:

QUESTION 125

Your Linux email server runs on a non-standard port number, port 2525. Which statement is true?

- A. IPS cannot scan that traffic for SMTP anomalies because of the non-standard port number. You must reconfigured the server to run on port 2.
- B. To apply IPS to traffic to that server, you must configured FortiGate SMTP proxy to listen on port 2525
- C. IPS will apply all SMTP signatures, regardless of whether they apply to clients or servers.
- D. Protocol decoders automatically detect SMTP and scan for matches with appropriate IPS signature.

Correct Answer: B

Section: (none)

Explanation

Explanation/Reference:

QUESTION 126

What are the advantages of FSSO DC mode over polling mode?

- A. Redundancy in the collector agent.
- B. Allows transparent authentication.
- C. DC agents are not required in the AD domain controllers.
- D. Scalability

Correct Answer: C

Section: (none)

Explanation

Explanation/Reference:

QUESTION 127

Which of the following statements are correct about NTLM authentication? (Choose three)

- A. NTLM negotiation starts between the FortiGate device and the user's browser.
- B. It must be supported by the user's browser.
- C. It must be supported by the domain controllers.
- D. It does not require a collector agent.
- E. It does not require DC agents.

Correct Answer: ABC

Section: (none)

Explanation

Explanation/Reference:

QUESTION 128

Which of the following statements best describes how the collector agent learns that a user has logged off from the network?

- A. The workstation fails to reply to the polls frequently done by the collector agent.
- B. The DC agent captures the log off event from the event logs, which it forwards to the collector agent.
- C. The work station notifies the DC agent that the user has logged off.
- D. The collector agent gets the logoff events when polling the respective domain controller.

Correct Answer: D

Section: (none)

Explanation

Explanation/Reference:

QUESTION 129

Which of the following statements best describes the role of a DC agents in an FSSO DC?

- A. Captures the login events and forward them to the collector agent.
- B. Captures the user IP address and workstation name and forward that information to the FortiGate devices.
- C. Captures the login and logoff events and forward them to the collector agent.
- D. Captures the login events and forward them to the FortiGate devices.

Correct Answer: C

Section: (none)

Explanation**Explanation/Reference:****QUESTION 130**

Which of the following FSSO modes must be used for Novell eDirectory networks?

- A. Agentless polling
- B. LDAP agent
- C. eDirectory agent
- D. DC agent

Correct Answer: C

Section: (none)

Explanation**Explanation/Reference:**

Reference: <http://docs.fortinet.com/uploaded/files/1041/fortigate-authentication-40-mr3.pdf> (page 140)

QUESTION 131

In a FSSO agentless polling mode solution, where must the collector agent be?

- A. In any Windows server
- B. In any of the AD domain controllers
- C. In the master AD domain controller
- D. The FortiGate device polls the AD domain controllers

Correct Answer: D

Section: (none)

Explanation**Explanation/Reference:****QUESTION 132**

Which of the following statements are characteristics of a FSSO solution using advanced access mode? (Choose three.)

- A. Protection profiles can be applied to both individual users and user groups

- B. Nested or inherited groups are supported
- C. Usernames follow the LDAP convention: CN=User, OU=Name, DC=Domain
- D. Usernames follow the Windows convention: Domain\username
- E. Protection profiles can be applied to user groups only.

Correct Answer: BCE

Section: (none)

Explanation

Explanation/Reference:

Reference: e <http://kb.fortinet.com/kb/documentLink.do?externalID=FD30964>

QUESTION 133

Which of the following FSSO agents are required for a DC agent mode solution? (Choose two.)

- A. FSSO agent
- B. DC agent
- C. Collector agent
- D. Radius server

Correct Answer: BC

Section: (none)

Explanation

Explanation/Reference:

QUESTION 134

In a FSSO agent mode solution, how does the FSSO collector agent learn each IP address?

- A. The DC agents get each user IP address from the event logs and forward that information to the collector agent
- B. The collector agent does not know, and does not need, each user IP address. Only workstation names are known by the collector agent.
- C. The collector agent frequently polls the AD domain controllers to get each user IP address.
- D. The DC agent learns the workstation name from the event logs and DNS is then used to translate those names to the respective IP addresses.

Correct Answer: D

Section: (none)

Explanation

Explanation/Reference:

QUESTION 135

Which FSSO agents are required for a FSSO agent-based polling mode solution?

- A. Collector agent and DC agents
- B. Polling agent only
- C. Collector agent only
- D. DC agents only

Correct Answer: A

Section: (none)

Explanation

Explanation/Reference:

QUESTION 136

What configuration objects are automatically added when using the FortiGate's FortiClient VPN Configurations Wizard?(Choose two)

- A. Static route
- B. Phase 1
- C. Users group
- D. Phase 2

Correct Answer: BD

Section: (none)

Explanation

Explanation/Reference:

QUESTION 137

Which of the following statements are correct concerning layer 2 broadcast domains in transparent mode VDOMs?(Choose two)

- A. The whole VDOM is a single broadcast domain even when multiple VLAN are used.
- B. Each VLAN is a separate broadcast domain.
- C. Interfaces configured with the same VLAN ID can belong to different broadcast domains.

D. All the interfaces in the same broadcast domain must use the same VLAN ID.

Correct Answer: BC

Section: (none)

Explanation

Explanation/Reference:

Reference: http://www.firewallshop.com/download/fortinet/FortiGate_VLANs_and_VDOMs_Guide.pdf

QUESTION 138

Which of the following statements is correct regarding FortiGate interfaces and spanning tree protocol? (Choose Two)

- A. Only FortiGate switch interfaces Participate in spanning tree.
- B. All FortiGate interfaces in transparent mode VDOMs participate in spanning tree.
- C. All FortiGate interfaces in NAT/route mode VDOMs Participate in spanning tree.
- D. All FortiGate interfaces in transparent mode VDOMs may block or forward BPDUs.

Correct Answer: BD

Section: (none)

Explanation

Explanation/Reference:

QUESTION 139

On your FortiGate 60D, you've configured firewall policies. They port forward traffic to your Linux Apache web server. Select the best way to protect your web server by using the IPS engine.

- A. Enable IPS signatures for Linux servers with HTTP, TCP and SSL protocols and Apache applications. Configured DLP to block HTTP GET request with credit card numbers.
- B. Enable IPS signatures for Linux servers with HTTP, TCP and SSL protocols and Apache applications. Configure DLP to block HTTP GET with credit card numbers. Also configure a DoS policy to prevent TCP SYN floods and port scans.
- C. None. FortiGate 60D is a desktop model, which does not support IPS.
- D. Enable IPS signatures for Linux and windows servers with FTP, HTTP, TCP, and SSL protocols and Apache and PHP applications.

Correct Answer: D

Section: (none)

Explanation

Explanation/Reference:

Reference: <http://docs.fortinet.com/uploaded/files/2181/fortigate-security-profiles-guide-524.pdf>

QUESTION 140

Which changes to IPS will reduce resource usage and improve performance? (Choose three)

- A. In custom signature, remove unnecessary keywords to reduce how far into the signature tree that FortiGate must compare in order to determine whether the packet matches.
- B. In IPS sensors, disable signatures and rate based statistics (anomaly detection) for protocols, applications and traffic directions that are not relevant.
- C. In IPS filters, switch from 'Advanced' to 'Basic' to apply only the most essential signatures.
- D. In firewall policies where IPS is not needed, disable IPS.
- E. In firewall policies where IPS is used, enable session start logs.

Correct Answer: ABD

Section: (none)

Explanation

Explanation/Reference:

